

A stylized illustration of a city street scene. In the foreground, there's a light blue building with a red roof and a white archway. A large green tree stands to the right of the building. In the background, there's a taller orange building with a person standing on its rooftop, pointing towards the left. A street lamp is visible on the right side of the orange building. The sky is a solid light blue.

# **PWLEH Learning Lab: Funding to Support Working with People with Lived Experience of Homelessness**

November 14, 2024

COMMUNITY  
SOLUTIONS

# Who We Are



**Amber Chandler**  
Strategy Lead  
PWLEH



**Elisabeth Peek**  
System Improvement Advisor  
PLEH



**Tanesha Travis**  
Consultant  
TSTJ Consulting LLC

# BFZ Housing Equity Strategists



**James Lee**

Consultant  
James Lee &  
Associates



**Tyra Thomas**

Consultant  
Street Voices of Change



**John Brady**

Consultant  
Lived Experience  
Advisors



**Jianna Hopkins-Israel**

Consultant

# Agenda

- Introductions of Facilitators
- Overview of Objectives, Expectations and Outcomes
- The Case for Funding
  - Why Fund
  - Infrastructure For Funding
    - What needs to be funded
- Funding Sources
  - Types
    - Traditional
    - Non Traditional
- Discussion/Reflection and Q &A
- Close Out

The background of the slide is a solid blue color. On the left side, there is a large, light blue semi-circle graphic that overlaps the blue background and the white text area.

## Objective

- Explore how and why investment/support is needed to create meaningful partnerships that ensure people with lived experience have real decision-making authority and the support needs of programs and organizations working towards meaningfully engaging people with lived experience.
- Discuss and learn traditional and creative funding to support needs identified.

# Expectations

- Participants will be present, committed and reflective.
- Participants will reflect on their current work around engaging people of lived experience and begin to understand if all aspects of the work are being supported ways
- Learn from peers and expand their current thinking around funding sources utilizing and incorporating an equitable lens.

# Outcomes

- Participants will be empowered to engage in courageous conversations around funding work to meaningfully engaged with those most impacted by homelessness
- Participants will be able to bring back to their communities creative ways to pursue and support their work around meaningfully engaging with PWLEH
- Participants will be able to examine current avenues pursuing around work to end homelessness to identify where there may be more opportunity to fund work to meaningfully engage PWLEH in their systems work.

**Intention**

**BE THE REASON  
SOMEONE FEELS  
WELCOMED, SEEN,  
HEARD, VALUED, LOVED.**

**THE POETICS**



# Why Fund: A Case for an Inclusive System

- To value the unique contributions of all who are involved/participate in the system
- To have adaptive and dynamic policies in addition to equitably allocated resources to serve and support those working and experiencing the system
- Incorporates and emphasizes the role of diverse perspectives and prioritizes and centers people over process



# Financial Infrastructure



- System created to enable programs and services to be funded, and ensure those providing services to be compensated
  - Dedicated Administrative Support
  - Technological programs to make payment efficient and easier and for hours to be calculated
  - Compensation rubric to clearly identify level of pay for types of service provided
  - Outlined equitable policy of what the organization will support

# Funded Activities



## Compensation

- Establish an **equitable** rate of compensation along with equitable process and procedures for PWLE roles before recruitment.
- Recommended strategies to promote equitable compensation include establishing pay equity policies
- Developing a compensation rubric that **addresses the cost of living** demands is essential for promoting equity.
- Considerations should also be given to establishing long-term positions or roles within the organization.



## Support Benefits

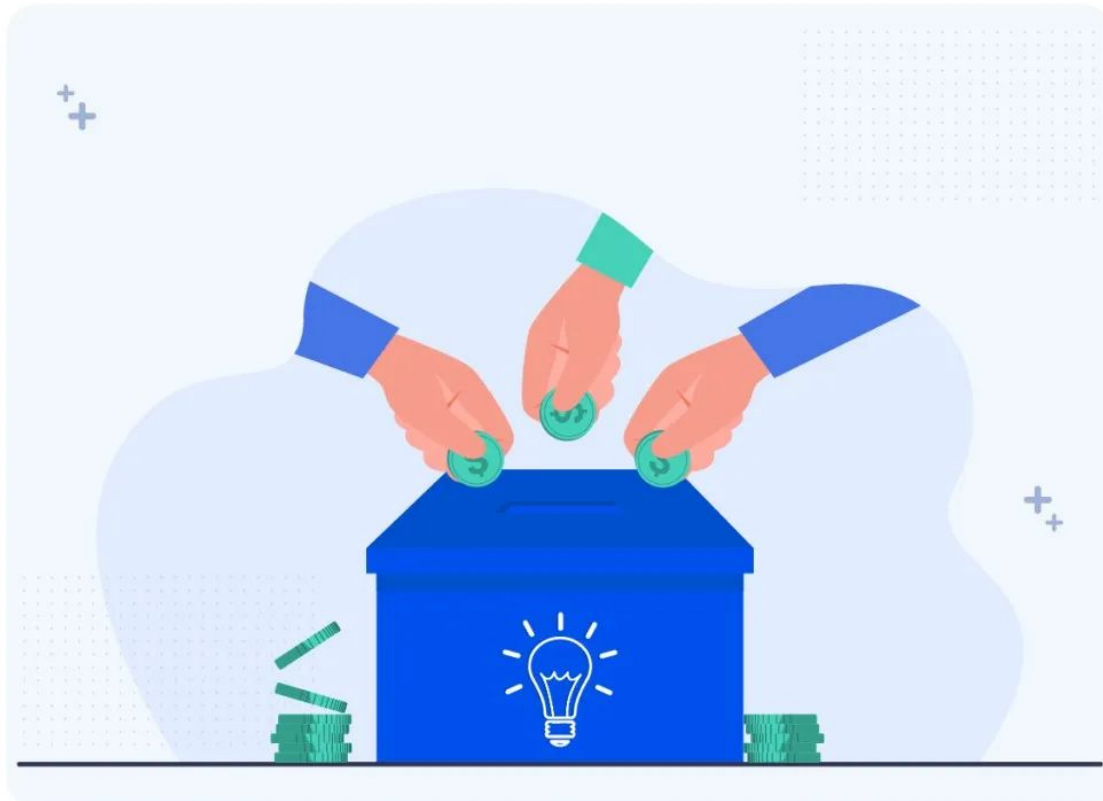
- Food
- Transportation
- Childcare
- Travel and Travel Accommodations
- Tech or Data



## Administrative

- Dedicated staff to support (ie Finance and PWLEH Coordinator) .
- Payment Types P2P/ money applications (Venmo, Cash App), utilizing prepaid cards, or accessing money orders, or Electronic Money Transfer (ACH)
- Meeting Space
- Sustainability Programs (ie conferences or trainings)

# Funding Types



- Government (including local, state, and regional)
  - NOFA
  - CDBG
  - Planning Grants
- Private Foundations
  - Kresge
  - Community Foundations
  - Family Foundations
- Corporate Foundations

# Traditional Funding Sources

- NOFA
- Planning Grants
- Fundraising
  - Private Foundation Proposals
  - Community Foundation Proposals
- Faith Based Organizations



# Non Traditional Funding Sources

- Community Development Block Grant
- Matching Funds
  - Community Foundation
  - State Programs
- Crowdsourcing
- Businesses that will match % of profits
- Corporate Foundations
- Braiding Funding
  - Multiple Jurisdictions
- Workforce Development Grants
- Aligning work with already existing budget line items that are funded
  - Consultants /3rd party partnerships



## Reflection/ Discussion Question & Q&A

- In your work to meaningfully engage PWLEH what funding sources have you gone after or use to support your work?
- What barriers do you encounter in funding the work?
- What ways can we support your funding efforts?
- What ways can we support your work?

We thank you for your interest and appreciate your time to participate in today's session.

**Please direct any and all questions to:**  
**[pwleh@community.solutions](mailto:pwleh@community.solutions)**