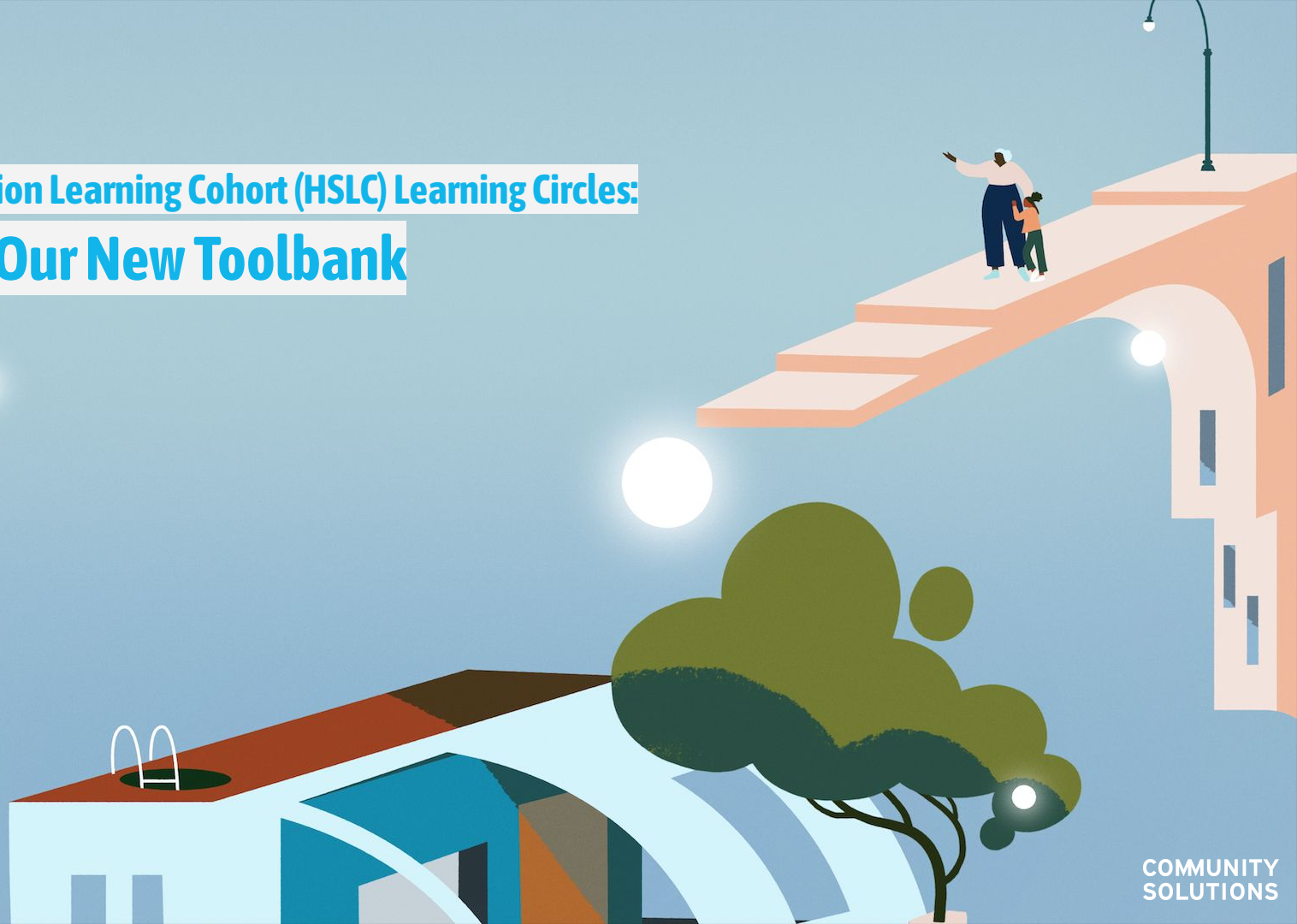


Housing Stabilization Learning Cohort (HSLC) Learning Circles: Introducing Our New Toolbank

March 13, 2024



Today's Learning Objectives

Participants Will:

- Understand the purpose of the Housing Stabilization Learning Cohort
- Understand how to use the HSLC Toolbank to support local efforts to create and scale-up coordinated homelessness prevention
- Understand where to find and how to navigate the HSLC Hub

What is the HSLC and the HSLC Learning Circle?

What is the Housing Stabilization Learning Cohort (HSLC)?

- An innovation cohort of Built for Zero (BFZ) and other communities focused on co-creating local approaches to coordinating and targeting prevention resources to reduce homelessness and housing insecurity.

Our HSLC Learning Circles

- Our HSLC Learning Circles are regular Peer Learning opportunities for both BFZ and non-BFZ communities that occur through regular (bi-monthly) virtual sessions organized by the HSLC team. Sessions provide an opportunity for learning about new/innovative or best practices nationally, including emerging tools and learnings from the HSLC Learning Lab communities. Communities participating in the Learning Circles have access to the HSLC Toolbank, a growing bank of guidance, tools, templates, and community examples designed to support communities with completing the **HSLC Foundational Priorities** for developing and launching a **Coordinated Homelessness Prevention** system

COORDINATED HOMELESSNESS PREVENTION SYSTEMS:

Foundational Priorities

Our Theory of Change

By coordinating a common prevention approach and targeting resources, communities can improve housing stability overall while reducing inflow into literal homelessness and advancing racial equity.

- 1. Establish Core Team, Staff Roles, & Roadmap**
 - a. Dedicated lead organization and staff
 - b. Diverse, representative Core Team with PLEH leaders
 - c. Shared understanding of Coordinated Prevention
 - d. Coordinated Prevention Roadmap
- 2. Examine Housing Insecurity & Emergency Needs**
 - a. Initial inflow investigation (data useability review, annual inflow analysis)
 - b. Community interviews
 - c. Housing insecurity heat mapping
- 3. Examine Housing Insecurity & Emergency Responses**
 - a. Environmental scan
 - b. Community interviews
 - c. Identification of new or current resources
- 4. Pilot Core Elements of Coordinated Prevention**
 - a. Pilot implementation plan
 - b. Early implementation and testing
 - c. Pilot review, learning, adjustment
- 5. Scale & Implement Core Elements of Coordinated Prevention**
 - a. Updated pilot implementation and scaling plan
 - b. Updated prevention roadmap

Session Topic:



Our Toolbank!

COMMUNITY SOLUTIONS

DONATE

COMMUNITY LOGIN



THE CHALLENGE

BUILT FOR ZERO ▾

HOUSING

NEWS

ABOUT US ▾

GET INVOLVED ▾

Homelessness is solvable.

This is not a radical belief — we work with more than 100 cities and counties making it a reality every day.

LET'S SOLVE IT TOGETHER.

Sign up for the latest news on Built for Zero's efforts to end homelessness and more!

First Name

Last Name

Email

SUBSCRIBE

SHARE



Key Features

- Description
- Audience
- HSLC Foundational Priority relationship
- Related Tools/Guidance

Built for [Zero Housing Stabilization Learning Cohort \(HSLC\)](#) GUIDE TO BUILDING YOUR CORE PREVENTION TEAM

March 2024

This working document is intended to be used by communities as a first step in building a Coordinated Prevention System that is designed in collaboration with key partners. Continuum of Care leadership, "upstream" service providers/partners, and people with lived experience of housing insecurity. Following the HSLC model and **Foundational Priorities**, communities should begin by building a local team that will organize and lead the planning, development, and implementation work. The local Core Prevention Team (Core Team) should be a diverse, representative group that includes people with lived experience of homelessness (PLEH). In addition to a Core Team, communities should identify a Lead Organization and staff to serve as the local Coordinator and a local Data Lead.

This document and related HSLC tools can be used to help communities identify and engage stakeholders who should be participating on your Core Prevention Team, including establishing [Roles and Responsibilities](#) for each entity, the estimated time/commitment needed, and the [Key Indicators of An Effective Team](#). This guide also includes worksheets to help you [Identify and Recruit Core Team Members](#) and offers suggested [Initial Steps](#) for successful team formation and implementation.

Audience:

- Backbone entity(ies)
- Local Core Prevention Team and key stakeholders

HSLC Foundational Priority:

- **1. Establish Core Team, Staff Roles, & Roadmap (months 1-2)**

Topics:

- [Roles & Responsibilities Of The Coordinated Homelessness Prevention Core Team & Local Leads/Coordinators](#)
- [Key Indicators Of An Effective Core Team](#)
- [Identifying & Recruiting Core Team Members](#)
- [Initial Steps For Successful Core Team Formation • Implementation](#)

Related Tools /Guidance:

- [Framework for Coordinated Homelessness Prevention](#)

HSLC FRAMEWORK for Coordinated Homelessness Prevention

This working document summarizes our collective understanding of the **key concepts, foundational priorities,** and **core elements** of a **Coordinated Homelessness Prevention** “system” or approach for preventing literal homelessness and reducing housing insecurity. The foundational priorities and related activities can be used by communities to organize stakeholders around a common vision and **Coordinated Prevention Roadmap** that spells out key planning, development, and implementation steps.

Topics Covered

- Key prevention concepts, principles
- Housing Insecurity Scale
- Foundational priorities for starting a coordinated prevention system
- Core elements of a functioning coordinated prevention system

Foundational Priority

- All

Audience

- Backbone Entity(ies)
- Core Prevention Teams

Type

- Guidance

Doc

Central Ohio Stable Housing Network



Mission

The Mission of the Central Ohio Stable Housing Network is: *“Keeping individuals and families stably housed.” We pursue this mission by working together to engage all communities in Central Ohio, prevent housing instability and homelessness, and center equity in housing stabilization.*

Working Framework

COSHN is using a **Coordinated Prevention Framework** to practice and document our shared understanding of approaches that reduce housing insecurity generally, while also preventing literal homelessness and inflow of individuals and families into the homeless crisis response system. This **Working Framework** is a direct outgrowth, and represents the further evolution, of work conducted by community partners as described above. The **Rationale, Core Elements and Core Principles** for the Working Framework are provided below.

Rationale

The **Working Framework** is a starting point for developing and broadly deploying the core elements and principles of a coordinated prevention model across a wide variety of community-based organizations and cross-sector partners e.g., healthcare, education, child welfare, criminal justice. In this framework individuals and families facing housing insecurity can more readily access housing-focused support to resolve or avoid a housing emergency. These core elements include standardized screening, response and referral tools, housing problem-solving, access to flexible financial assistance, and more targeted and intensive support for households with the greatest urgency, vulnerability and/or unique housing assistance and stabilization needs, including concerted efforts to develop and build partnerships with rental property owners and managers.

The shared understanding and definitions included here provide a basis for coordinating training, information, referral and triage resources, and flexible support for people experiencing housing insecurity in Columbus and Franklin County, including specific prioritization protocols for accessing targeted prevention resources for those with greater risk and vulnerability.

This document provides a starting point for a coordinated prevention framework that:

- Memorizes our collective understanding and purpose around reducing housing insecurity and preventing all forms of homelessness, most especially literal homelessness.
- Helps to clarify where eviction prevention and other resources fit relative to preventing literal homelessness versus other forms of homelessness and housing insecurity.
- Supports more equitable investment of prevention resources toward addressing housing insecurity and homelessness, allowing resources to be properly characterized and measured relative to their actual impact.
- Helps to align and directly connect emergency housing and prevention resources with other sectors (e.g., health, education, criminal justice).
- Provides a means to quickly connect people to housing help no matter when or where their need arises.

Guide to Building A Core Team

This guide and incorporated tools are intended to be used by communities as a first step in building a local team that will organize/lead the planning, development, and implementation of a Coordinated Prevention System. This document can be used to help communities identify and engage key partners who should be participating on the Core Prevention Team, including establishing **Roles and Responsibilities** for each entity. This guide includes the **Key Indicators of An Effective Team**, worksheets to help you **Identify and Recruit Core Team Members** and offers suggested **Initial Steps** for successful team formation and implementation.

Topics Covered

- Roles & Responsibilities of a Core Team
- Key Indicators of Effective Core Teams
- Tips & Considerations for Identifying / Recruiting Diverse Representation for the Core Team
- Initial Steps for Successful Team Formation & Implementation

Foundational Priority

- 1A & 1B

Audience

- Backbone Entity(ies) & Core Prevention Teams

Type

- Guidance/Tool

[Doc](#)

PLEH Engagement/Support Guidance

This guidance assists communities in developing a strategy and determining the structure that is best for their current circumstances and needs to integrate people with lived experience of homelessness (PLEH) into their coordinated prevention work.

Topics Covered

- PLEH Engagement/Support Guidance
- Why it is Important to Engage People with Lived Expertise and Other Diverse Leaders for Your Core Team
- PLEH Engagement Structures/Models
- PLEH Compensation and Job Descriptions
- Strategy for Recruiting/Engaging and onboarding PLEH

Foundational Priority

- 1A & 1B

Audience

- Backbone Entity(ies)
- Core Prevention Teams

Type

- Guidance

Housing Insecurity & Emergency Needs Assessment Guide

This document provides guidance for examining community data to better understand the characteristics and service needs of people who experience homelessness and severe housing insecurity.

Topics Covered

- Examining HMIS data useability
- Conducting annual inflow analysis
- Conducting community interviews
- Creating a Housing Insecurity Heat Map

Foundational Priority

- 2A, 2B, 2C

Audience

- Core Prevention Teams
- HMIS Data Leads/Analysts

Type

- Guidance

Doc

Housing Insecurity & Emergency Resources Assessment Guide

This document provides guidance and access to a template that can be used for conducting an environmental scan of currently available community prevention resources, completing community interviews to gain a fuller understanding of how people access those resources, as well as considerations for aligning and developing partnerships to support a Coordinated Prevention approach.

Topics Covered

- Environmental Scan
- Coordinated Homelessness Prevention Partner Types
- Community Interviews

Foundational Priority

- 3A, 3B

Audience

- Core Prevention Teams

Type

- Guidance

Doc

Coordinated Prevention Pilot Implementation Plan Template

The purpose of this template is to assist communities with developing an actionable plan to pilot one or more Core Elements of a Coordinated Prevention System. This could include key elements such as developing partnerships in neighborhoods with higher housing insecurity, testing housing-focused screening and partner referral approaches, offering training to select partners on Housing Problem-Solving, incorporating flexible financial assistance into targeted prevention/diversion programs, and testing processes for prioritizing timely access to other existing community resources when needed for households with the highest imminent risk for literal homelessness.

Foundational Priority

- 4A

Audience

- Core Prevention Teams

Type

- Template

Housing Insecurity Screening Tool

The Housing Insecurity Screening tool is a standardized tool for determining the immediate material risk of a person or household relative to literal homelessness. The tool can be adapted to incorporate additional or modified screening questions and used with Coordinated Prevention partners to ensure consistent screening and immediate referral to assistance for people with higher housing insecurity.

Foundational Priority

- 4B

Audience

- Implementing providers

Type

- Template w/guidance

Housing Insecurity Screening Tool <small>v.1, November 2022</small>	
<p>We are asking all [add appropriate descriptor: e.g., clients, patients, participants, people] four questions about your housing situation that might impact your [add relevance: e.g., health, education, how we can best help you, etc.] If you choose to answer and your needs are urgent, 1 or someone from our team may talk with you about resources. Are you okay with me asking the questions?</p> <p><input type="checkbox"/> NO/Declined. STOP</p> <p><input type="checkbox"/> YES → CONTINUE</p>	
<p>1. Where did you stay last night?</p> <ul style="list-style-type: none"> • If household was in emergency shelter last night and is returning to emergency shelter tonight: [add appropriate local response/referral: e.g., Discontinue screening and immediately refer back to emergency shelter for re-housing assistance]. • If household was unsheltered last night (street, car, etc): Discontinue screening and immediately explore other safe and appropriate options for tonight with family, friends, etc. If no safe, appropriate option refer to [add appropriate local response/referral: e.g., call the Homeless Hotline at 555-555-5555]. 	<p><input type="checkbox"/> My own apartment/home</p> <p><input type="checkbox"/> Family or friend's home</p> <p><input type="checkbox"/> Hospital or treatment facility</p> <p><input type="checkbox"/> Emergency shelter → STOP, REVIEW GUIDANCE</p> <p><input type="checkbox"/> Street, car, bus station, abandoned building, other place not meant for habitation → STOP, REVIEW GUIDANCE</p> <p><input type="checkbox"/> Other</p>
<p>2. Is the place where you're currently staying safe for you?</p> <ul style="list-style-type: none"> • Housing is considered unsafe when someone is fleeing or attempting to flee their housing or the place they are staying because of domestic violence, dating violence, sexual assault, stalking, or other dangerous or life-threatening conditions related to violence that has taken place in the house or has made them afraid to return to the house, including, <i>but not limited to:</i> trading sex for housing, trafficking, physical abuse, emotional abuse, and violence because of the person's sexual orientation or gender identity. 	<p><input type="checkbox"/> YES → CONTINUE TO QUESTION 3</p> <p><input type="checkbox"/> NO → CONTINUE TO QUESTION 4</p>
<p>3. Do you have to leave the place where you're currently staying?</p> <ul style="list-style-type: none"> • If "Maybe or Don't Know", consider asking more about their current situation and whether it may be tenuous or temporary for any reason. 	<p><input type="checkbox"/> YES → CONTINUE TO QUESTION 4</p> <p><input type="checkbox"/> MAYBE or DON'T KNOW → REVIEW GUIDANCE, CONTINUE TO QUESTION 4</p> <p><input type="checkbox"/> NO → STOP: RISK LEVEL: Stably Housed</p>
<p>4. Do you have another safe housing option where you could stay</p>	<p><input type="checkbox"/> YES → CONTINUE TO QUESTION 5</p>
3	<p>Imminent Risk of Literal Homelessness (within 1-14 Days)</p>

HOUSING INSECURITY RISK TYPOLOGY Definitions & Indicators	
LIVING SITUATION	HOUSING OPTIONS & RESOURCES
<ul style="list-style-type: none"> • Is currently literally homeless and continues to have no other safe housing option sought outside of available emergency shelter, Safe Haven, or transitional housing options. OR • Must leave current housing today (e.g., due to court-ordered eviction, foreclosure, immediate safety or health risk, host family/friend request to leave, etc.) OR • Must leave an institution (e.g., hospital, jail, treatment facility) today. 	<p>Does not have other housing options, financial resources, and/or support networks to maintain or obtain a safe place to stay today.</p>
<ul style="list-style-type: none"> • Current housing is safe, AND • Must leave current housing within 14 days (e.g., due to court-ordered eviction, foreclosure, imminent safety or health risk, host family/friend request to leave, family conflict, etc.) OR • Must leave an institution (e.g., hospital, jail, treatment facility) within 14 days. 	<p>Does not have other housing options, financial resources, and/or support networks to maintain or obtain a safe place to stay after the next 14 days.</p>
<ul style="list-style-type: none"> • Current housing is safe. AND 	<p>Does not have other housing</p>

Community Roadmap for Coordinated Prevention

This Coordinated Prevention **Roadmap** is intended to be used as a local, individualized **community action plan**. The purpose of this tool is to serve as a guide that the Core Prevention Team can adapt and reference on a regular basis to 1) Assess where you are related to the HSLC Foundational Priorities, 2) identify the priorities and necessary steps that are needed as you create your Coordinated Prevention system, and 3) track actions for each priority step (who + by when) for ensuring forward movement. This Roadmap should be an **iterative document** that is reviewed and updated regularly by the community Lead and Core Prevention Team.

Foundational Priority

- 1D

Audience

- Community Lead/Backbone entity(ies)
- Core Prevention Team and key partners

Type

- Template to be adapted to meet community preference

An illustration of a park scene. A large tree with orange and brown foliage dominates the upper half. In the foreground, a person with dark hair, wearing a yellow shirt and dark pants, sits on a pink blanket on a green lawn. A white dog with brown spots sits next to them. A picnic basket is on the blanket. In the background, a stylized city skyline with blue and white buildings is visible. Two blue street lamps with white globes are positioned on either side of the tree. The overall style is flat and colorful.

Questions

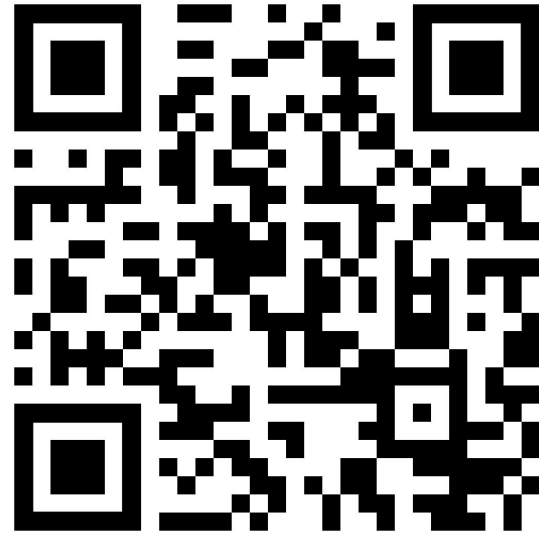
**Your Valuable
Feedback is
Appreciated!**

<https://forms.gle/USmKeaBUixRPSXPLA>



**Interested in
Joining Our
Learning Circles?**

<https://forms.gle/p9gqZFBbb4ZbxRVc6>



**More
information**

community.solutions

**Antonio Caffey
acaffey@community.solutions**

A stylized illustration of a park scene. A large tree with orange and brown foliage dominates the upper half. Below it, a person in a yellow shirt and dark pants sits on a pink blanket on a green lawn, accompanied by a white dog. The background features rolling green hills and a city skyline in shades of blue and white. Two blue street lamps with white globes are positioned on either side of the central scene. A dark grey banner with the text 'THANK YOU!' is centered over the middle of the image.

THANK YOU!

COORDINATED HOMELESSNESS PREVENTION SYSTEMS:

Core Elements (v.2)

- 1. Coordinated Prevention *Partners*:** *community partners formally engaged as Access Points & Service Providers across a wide variety of community-based and cross-sector settings.*
- 2. Coordinated Prevention *Access & Services*:** *Housing Problem-Solving, flexible financial assistance, and prioritized access to other existing community resources that reduce imminent risk homelessness and help to stabilize housing.*
- 3. Coordinated Prevention *Manual, Tools, and Guidance*:** *for Access Points and Service Providers to consistently and equitably identify and assist higher priority households.*
- 4. Coordinated Prevention *Training*:** *regular training for Access Point and Service Provider partner staff on key skills, community resources, and all things housing.*
- 5. Coordinated Prevention *Management and Support*:** *ongoing backbone entity to lead and support partner recruitment, training, coordination, reporting, analysis, and ongoing system improvement and development.*

Lived Experience of Prevention Slides & Conversation/Interview Guide(s)

(purpose)

Foundational Priority

- 2B
- 3B

Audience

- Core Prevention Teams

Type

- Template w/guidance

Community Toolbank: Sample System Handbooks, Provider Guidance, Training Materials

Coordinated Prevention System materials from various providers

Foundational Priority

- 4B

Audience

- Backbone entity(ies)

Type

- Templates and examples