

The Housing Stabilization Learning Cohort

Coordinated Homelessness Prevention

Sept. 21, 2023



Foundational Priorities for HSLC: Starting Points

Our Theory of Change

By coordinating a common prevention approach and targeting resources, communities can improve housing stability overall while reducing inflow into literal homelessness and advancing racial equity.

Foundational Priorities for Communities

1. *Building Leadership & Organizational Capacity*
2. *Understanding Current State of Prevention*
3. *Using Qualitative & Quantitative Data*
4. *Moving Toward a Coordinated Prevention Approach*
5. *Setting Measurable Goals to Reduce Inflow & Advance Racial Equity*



BFZ Communities In The Initial HSLC Cohort



Eugene/Lane County, OR



**Richmond/Contra Costa
County, CA**



Greater Hartford, CT

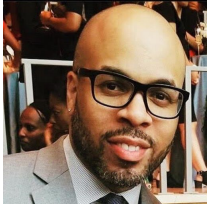


**Charlotte/
Mecklenburg County, NC**



Cincinnati/Hamilton County, OH

Who We Are



Taj
Director



Antonio
Strategy Lead



Tyler
System Improvement
Advisor



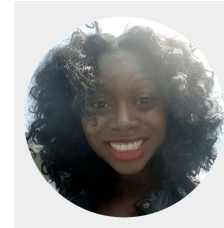
Nadia
Manager, Inflow



Amber
Strategy Lead,
PLEH



Mandy
Administrative Assistant



Elisabeth
System Improvement
Advisor



Tom Albanese
Consultant
Tom Albanese Consulting



Michelle Valdez
Consultant,
Michelle Valdez Consulting

Our Panel Today



Tom Albanese
Consultant,
Tom Albanese
Consulting



Sarah Pavone
Director of Strategy,
Journey Home
Hartford, CT

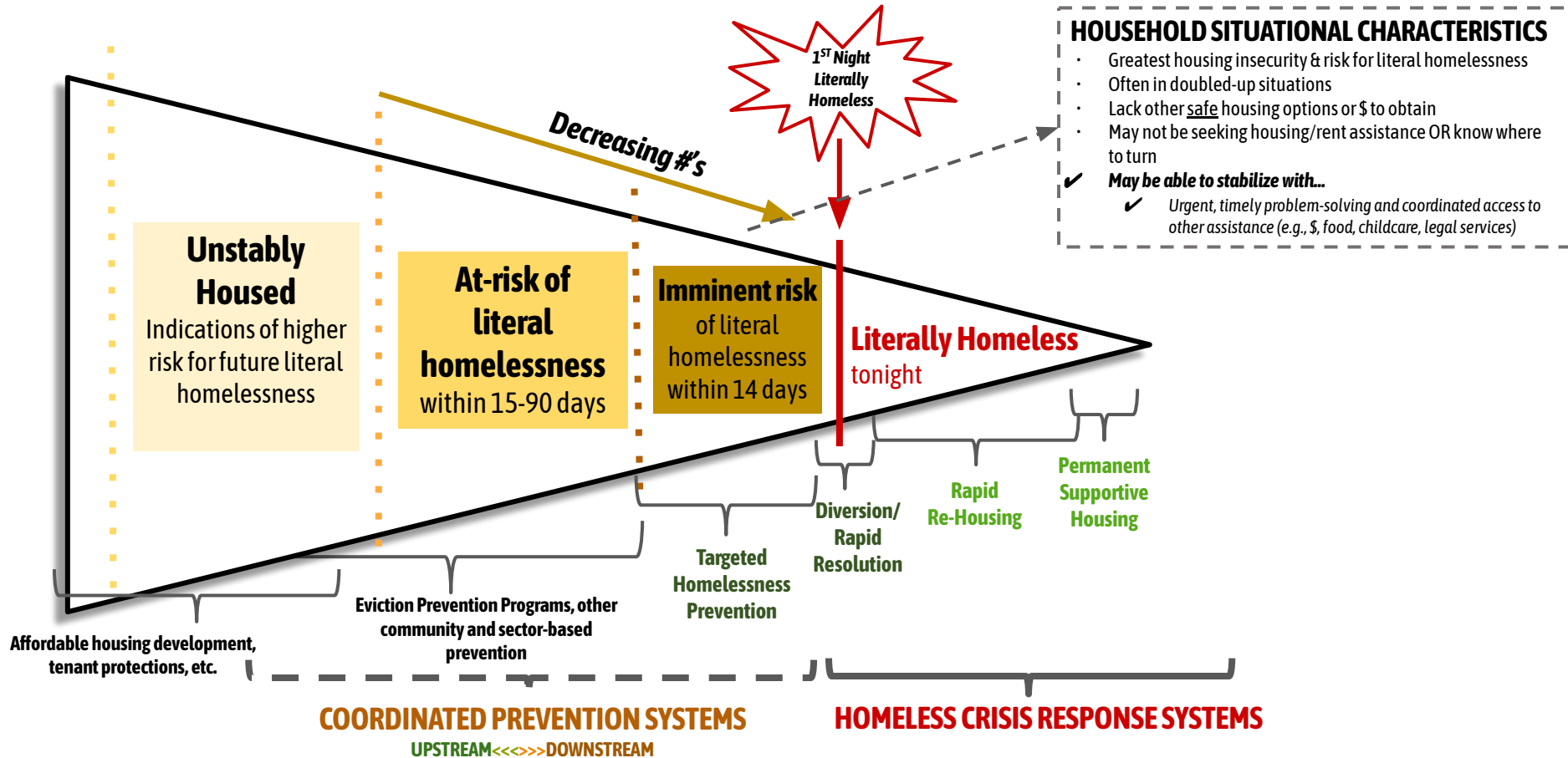


Michelle Valdez
Consultant,
Michelle Valdez
Consulting

What is COORDINATED Homelessness Prevention?

A ***community-wide approach*** that uses common risk screening criteria to identify people who are housing insecure, including those who are at greatest risk for literal homelessness, and then offers immediate, coordinated access to housing problem-solving and prevention-related resources, including prioritized access to assistance for people with more urgent prevention needs.

Community-Wide Housing Stabilization Approach



Foundational Priorities for HSLC: Starting Points

Our Theory of Change

By coordinating a common prevention approach and targeting resources, communities can improve housing stability overall while reducing inflow into literal homelessness and advancing racial equity.

Foundational Priorities for Communities

1. *Building Leadership & Organizational Capacity*
2. *Understanding Current State of Prevention*
3. *Using Qualitative & Quantitative Data*
4. *Moving Toward a Coordinated Prevention Approach*
5. *Setting Measurable Goals to Reduce Inflow & Advance Racial Equity*



THANK YOU!

For more information, contact:
Antonio Caffey, Strategy Lead
acaffey@community.solutions