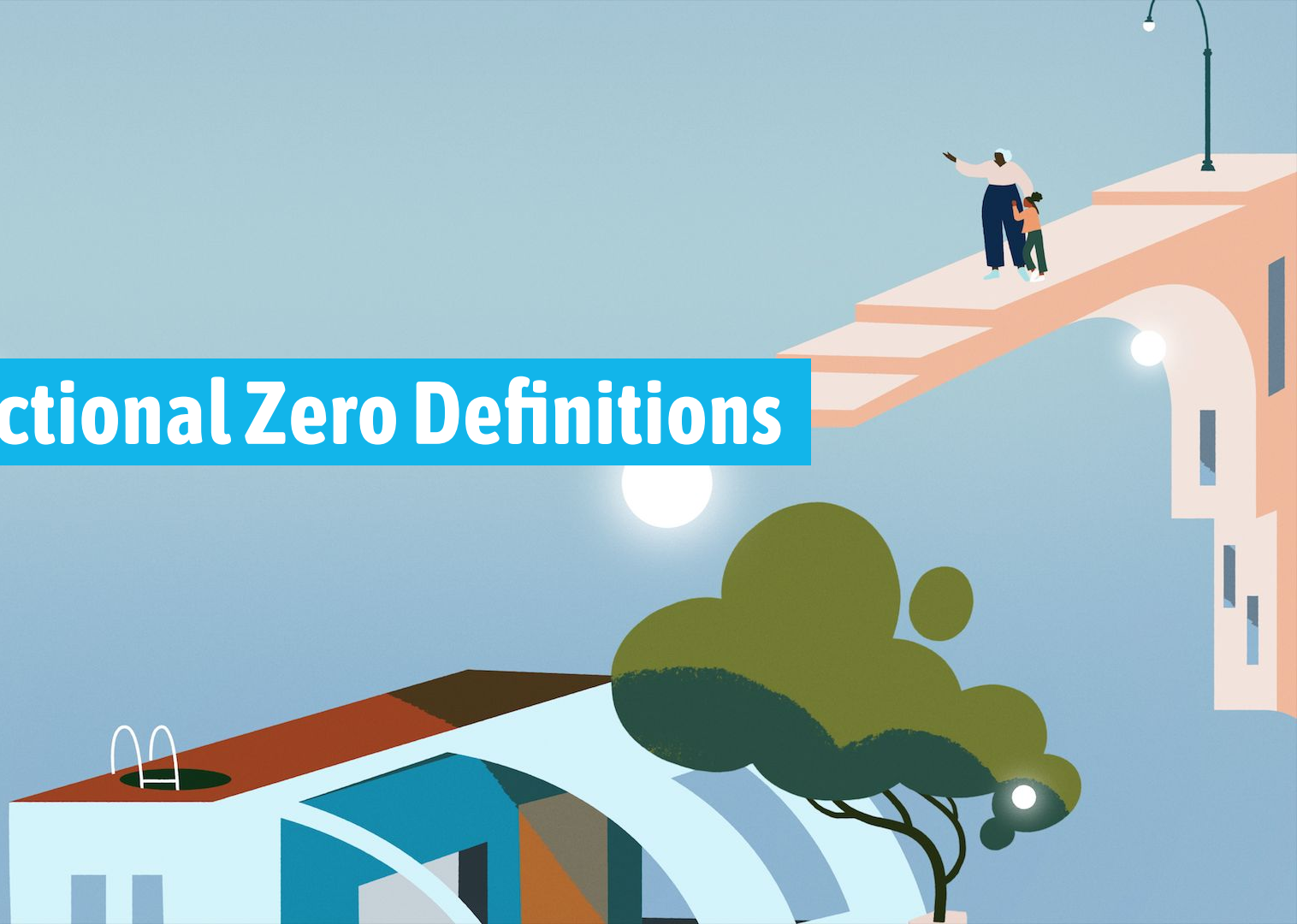


New Functional Zero Definitions



Zero for All Team



Ramina Davidson
Strategy Lead
Zero for All



Chela Schuster
System Improvement Advisor
Zero for All

A stylized illustration of a city at night. In the foreground, there's a light blue building with a red roof and a small white archway. To its right is a large, dark green tree. In the background, a long, orange bridge with white arches spans across the scene. Two people, an adult and a child, are walking on the bridge. The sky is a light blue-grey, and there are several white circular lights scattered throughout the scene, including one on the bridge and one near the tree.

Functional Zero Definitions

BFZ Learning Session, May, 2022

First Principles for FZ Definition

- Objective and replicable
- Standardized but dynamic to local conditions
- Simple and usable
- Credible with critical stakeholders, including people with lived experience, practitioners in the field, adjacent system stakeholders, and the general public

Definitions 1.0 - Veterans

- 2015 - Inspired by measures of the unemployment rate – “Functional Zero” coined to differentiate from a “Hard Zero” for Veteran Homelessness
- Homelessness should be “rare, brief, and non-recurring”
- Proxy for stock & flow equilibrium - capacity to house anyone within 30 days – length of time and returns from housing “baked in”



Actively
Homeless #



6-Mth Avg Housing
Placement Rate

Definitions 1.0 - Chronic

- 2016 - started with “Hard Zero” but adjusted to align with concerns around feasibility in large cities



^{*}Whichever is greater, only relevant for communities with total homeless population over 3,000.

Definition Design Process

An iterative approach focused on consultation and testing with community stakeholders:

- *December 2020:*
 - Discussed with 14 diverse BfZ communities what it would take to prove to residents that homelessness had been solved and shared draft measures.
 - Held focus group with 11 people with lived experience of homelessness to ask what it would take to prove to them that homelessness had been solved.
- *January 2021:* Synthesized feedback and refined draft measures.
- *February + March 2021:*
 - Re-consulted with community stakeholders.

Definition Design Process

Co-architects:

- *Gulf Coast*
- *Rockford*
- *Abilene*
- *Arlington*
- *DC*
- *Spokane*
- *Maricopa Regional*
- *Montgomery County*
- *Charlotte*
- *Nassau County*
- *Central VA*
- *Jacksonville*
- *Ft. Worth*
- *San Diego*

Definition Design Process Cont'd

An iterative approach focused on consultation and testing with community stakeholders:

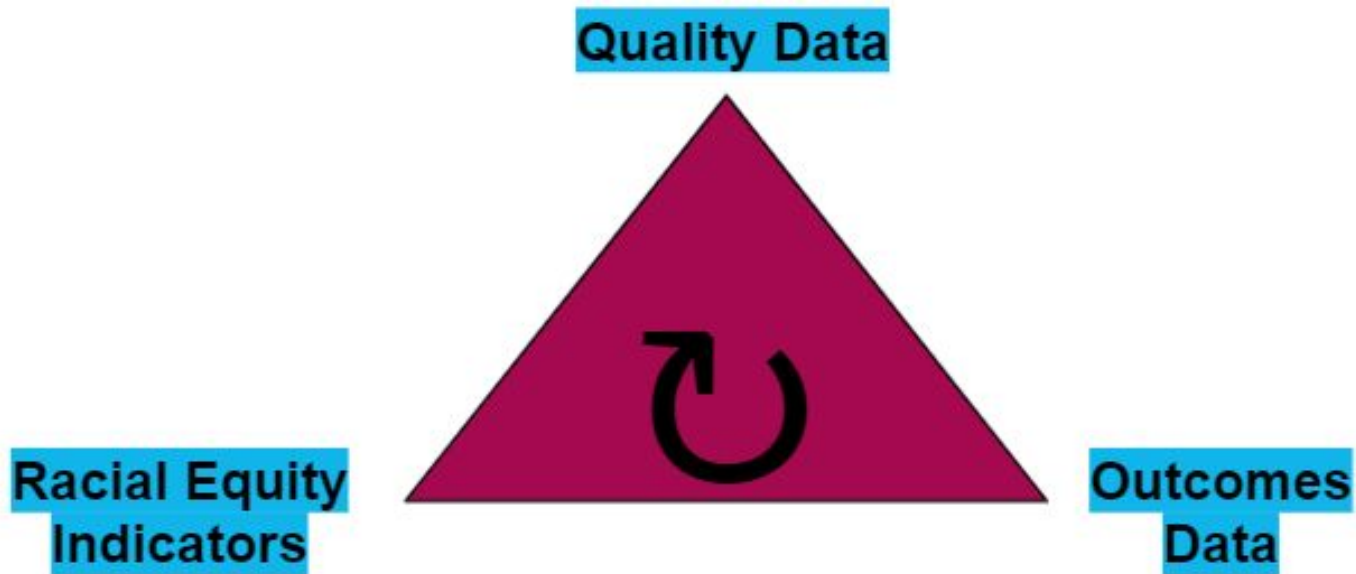
- *May 2021:*
 - First meetings with federal partners about definition alignment.
 - Soft launch definitions in incubator of communities.
- *August 2021:* Begin co-design work with community leads on all populations scorecard to support definitions.
- *September 2021-present:* Begin co-design of implementation process (“Path to Zero” process) in Zero for All communities to accelerate local credibility and cross-sector ownership of definitions.

Definition Design Process Cont'd

An iterative approach focused on consultation and testing with community stakeholders:

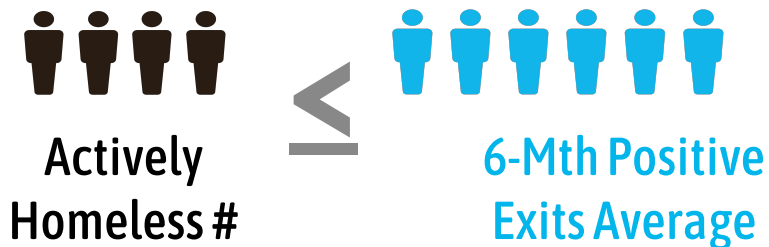
- *March 2022-present:* Designing new PMT++ for data collection and visualization to support communities to track progress toward new end state measures.
- *April 2022:*
 - More meetings with federal partners.
 - Refined measures based on soft launch feedback.
- *May 2022:*
 - Publicly launch new definitions at Learning Session.
- *June 2022-beyond:*
 - Continue to learn and fine tune definitions and tools.

Updated FZ Definitions



System Outcomes

For each population:



- *Single Adults:* Unaccompanied individuals 18 years old and over
- *Youth:* Unaccompanied individuals under 25 years old (includes pregnant & parenting youth)
- *Families:* Families with minor children

System Outcomes

For ending all homelessness:

- *For all individuals experiencing homelessness as defined by the All Single Adults, Youth, and Families definitions:*
- The community has met and sustained the Functional Zero definitions above for youth, families, single adults, veterans and chronically homelessness individuals.
- 45 days or less on average length of time from ID to Move-In.
- Of all exits to permanent housing, no more than 5% of positive exits result in a return to the homelessness system within 2 years of exit from the homeless system (e.g. subsidy or services).

Other metrics & key terms defined

- Positive exits
- Unsafely housed individuals and families
- Unstably housed youth and families
- Time-limited housing for youth and families
- Adjacent systems
- Indicators of a Racially Equitable Homeless Response System

Take the Session Rapid Feedback Survey

<http://s.alchemer.com/s3/Rapid-Feedback-May-2022>



Join us back here for dinner at 6:00-8:30!



A stylized illustration featuring a central orange sun with radiating lines, partially obscured by soft, pinkish-white clouds. The background is a light blue sky. In the bottom right corner, there are stylized buildings in shades of blue and white. The overall aesthetic is clean and modern.

Thank You

COMMUNITY
SOLUTIONS