

THE QUALITY BY-NAME LIST:
**AN ESSENTIAL STEP TOWARD
ENDING HOMELESSNESS IN YOUR
COMMUNITY**

Your starting point

Homelessness is a complex systems problem. To end it, you need a reliable way to know everyone in need of housing by-name and in real time. We call that kind of data a by-name list.

Perhaps your community already has a list like that, stored in an Excel sheet or split across several different data systems. Perhaps it gets updated once every couple of months, or, if someone is sick or on vacation, perhaps not at all. If you're like most communities, only a few agencies contribute to the list, meaning it never really includes everyone.

That list won't do the trick.



COMMUNITY SOLUTIONS

has helped 9 American communities **sustainably end chronic or veteran homelessness.** Every one of those communities got to zero with **a quality by-name list** that continues to yield accurate, real-time, data on homelessness.

Benefits of a by-name list

SMARTER TRIAGE

- Target limited housing resources to the most vulnerable individuals and families
- Stretch resources further by connecting people to the most cost effective support to meet their needs

IMPROVED SYSTEMS

- Use aggregate data to see trends, flag bottlenecks, and identify improvement opportunities across your system
- Test new strategies and know quickly whether your efforts are reducing homelessness

RESOURCE ADVOCACY

- Ground your advocacy in concrete data
- Use monthly data trends to make stable projections and quantify your projected resource gaps

Person-level data

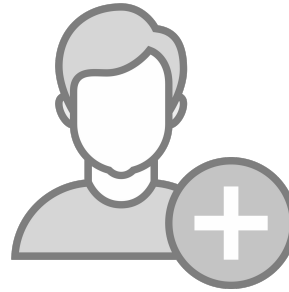
Name:

Triage Score:

**Housing
Recommendation:**

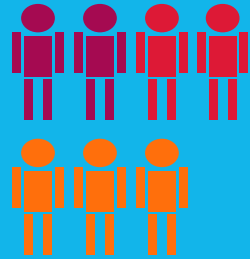
Health history:

Service history:

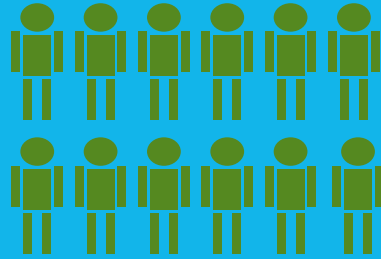


Six data points to help you drive reductions

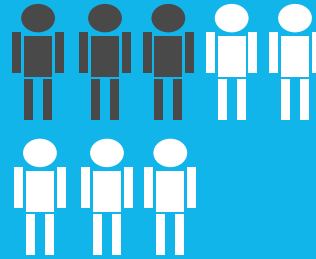
INFLOW



ACTIVELY HOMELESS



OUTFLOW



INFLOW:
NEWLY
IDENTIFIED



INFLOW:
RETURNED FROM
HOUSING



INFLOW:
RETURNED FROM
INACTIVE

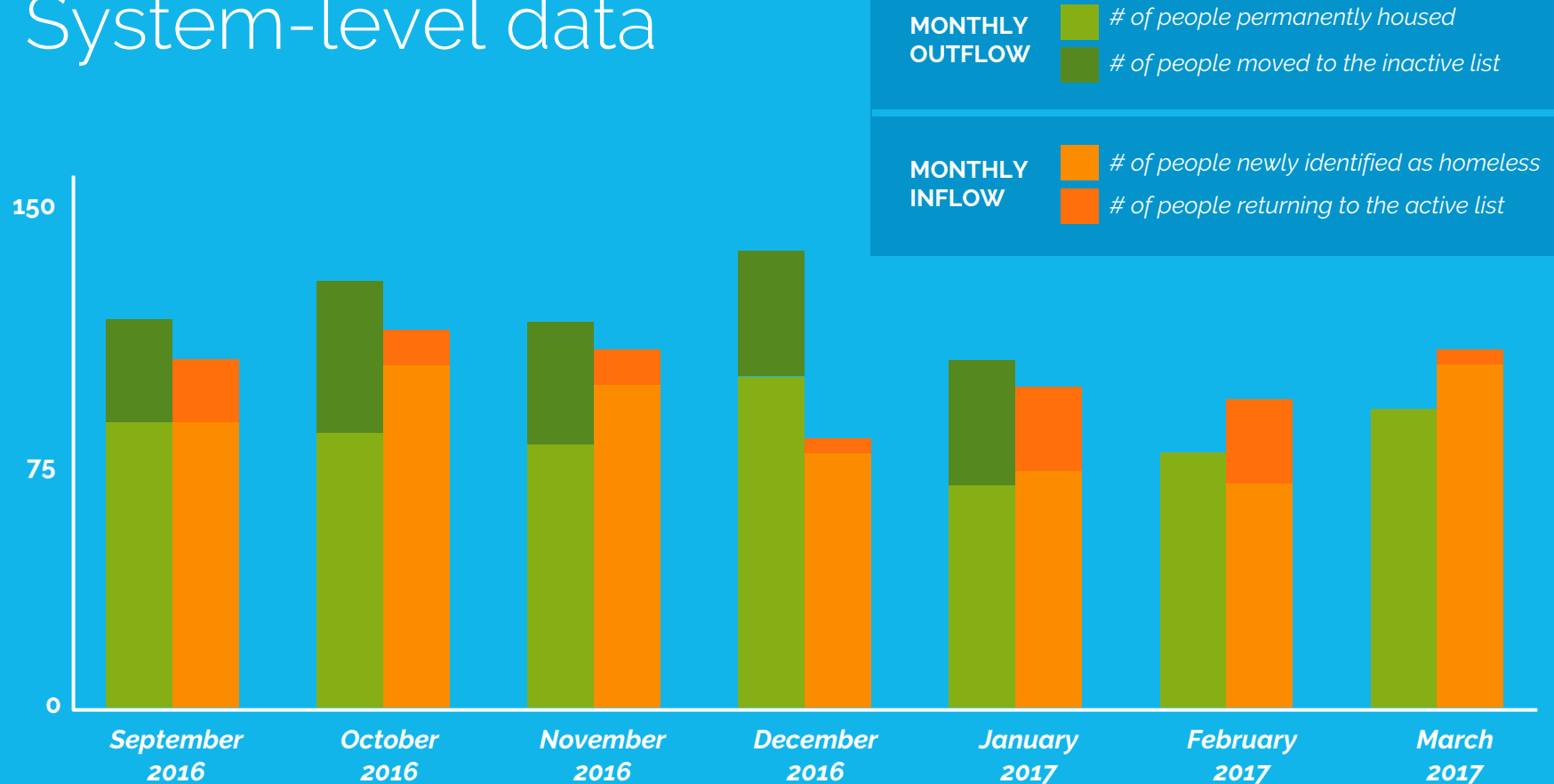


OUTFLOW:
HOUSING
PLACEMENTS



OUTFLOW:
MOVED TO
INACTIVE

System-level data



What makes a by-name list “quality?”

FULL COVERAGE

- All agencies and programs are represented
- List includes people sleeping in shelters and on the streets

DATA RELIABILITY

- Aggregate data balances month over month, just like your checkbook

REAL-TIME UPDATES

- List is updated monthly, at a minimum
- As people's housing status changes, those changes are reflected on the list

PERSON- LEVEL DATA

- Each person has a file that includes their name, history, health and housing needs
- Each person can be followed through the system

Assessing your list

A framework for measuring the quality of your community's data and improvements over time

COMMUNITY PARTICIPATION & COVERAGE

1. Outreach coverage
2. Providers reporting data
3. Partnerships with institutions discharging homeless individuals

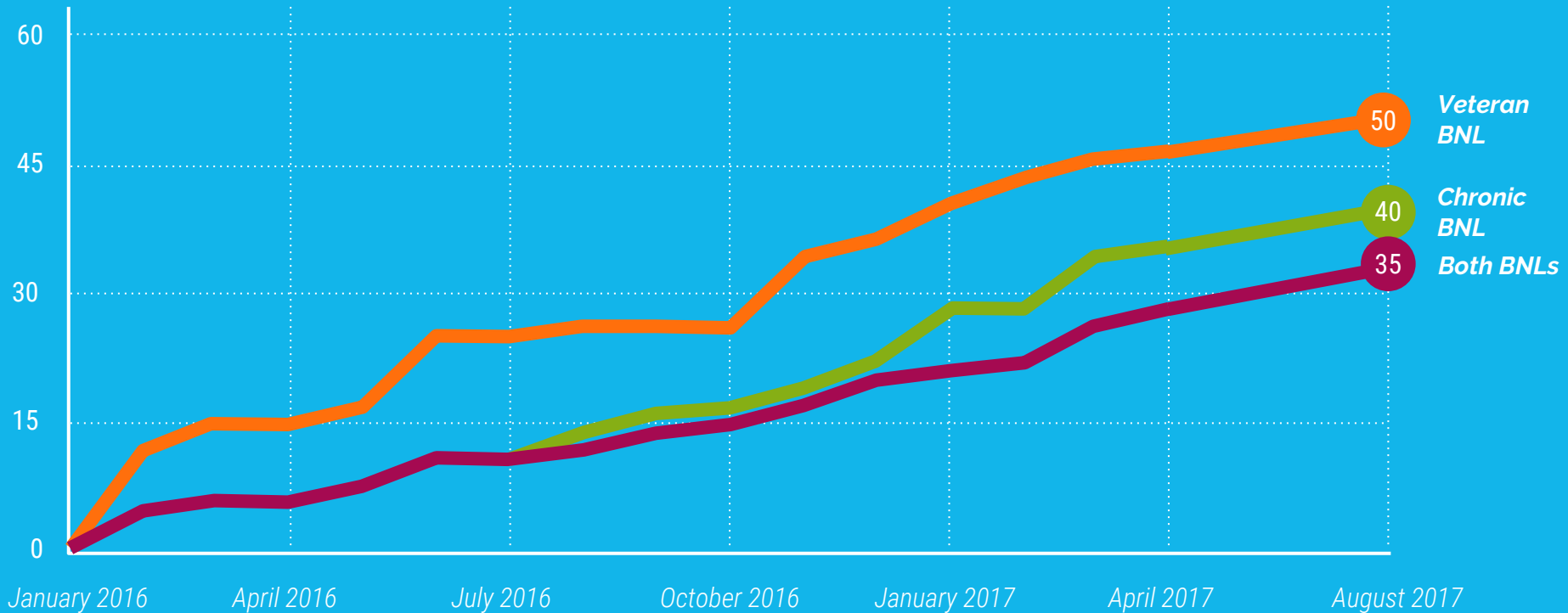
POLICIES & PROCEDURES

4. Inactive Policy
5. Tracking without full assessment

DATA INFRASTRUCTURE

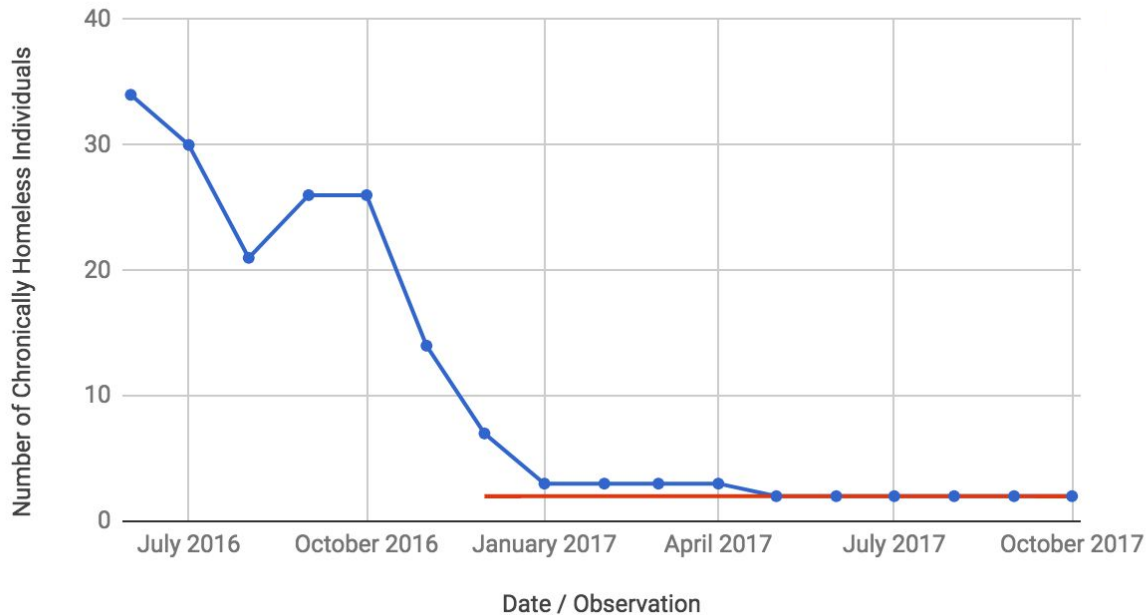
6. Unique identifier
7. Tracking homeless status
8. Tracking newly identified people
9. Tracking chronic homelessness
10. Tracking returns to the system

US communities with a quality by-name list



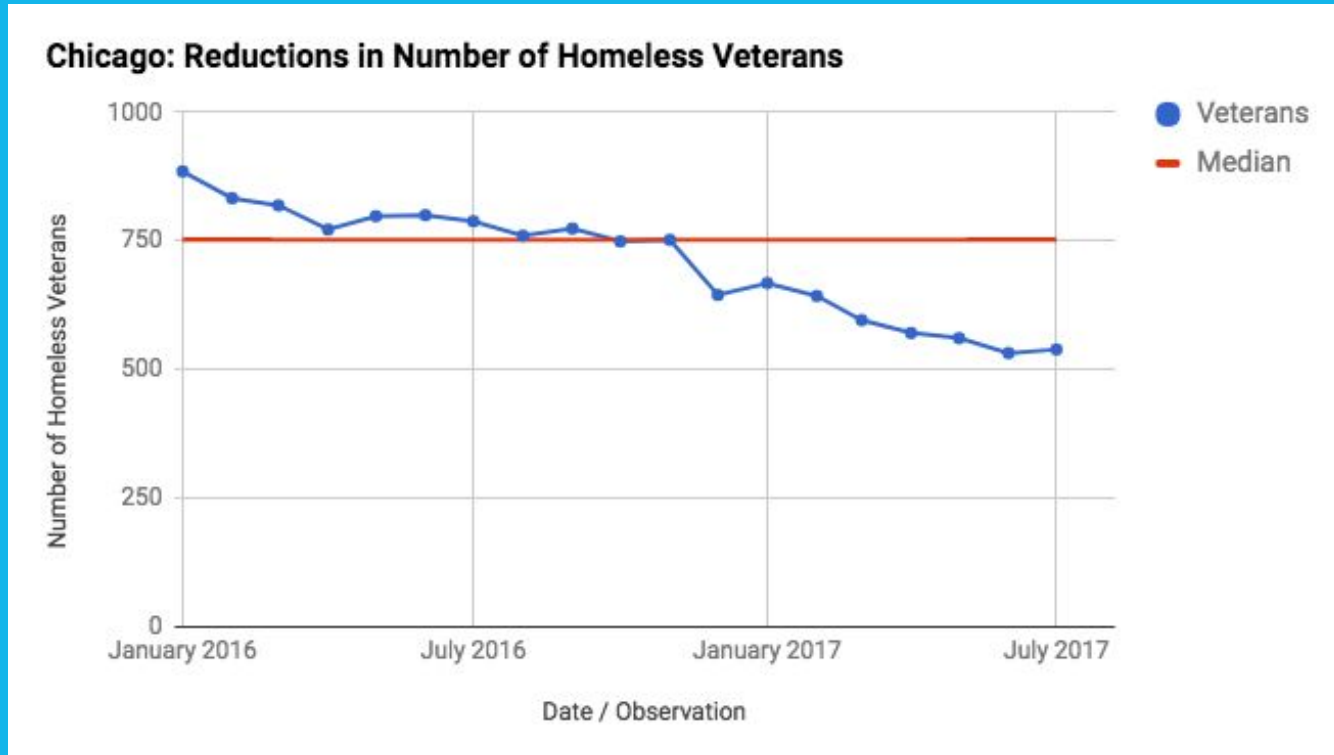
Case Study: ending chronic homelessness with a by-name list

Rockford, IL - Ending Chronic Homelessness



- Chronic Homelessness
- Sustain Threshold

Case Study: reducing veteran homelessness with a by-name list



Don't miss out!

We'd love to talk more about how a by-name list can help your community end homelessness.



Let's Get Started

Jake Maguire, Principal

Email: jmaguire@cmtysolutions.org

Phone: (347) 266-0175

**COMMUNITY
SOLUTIONS**